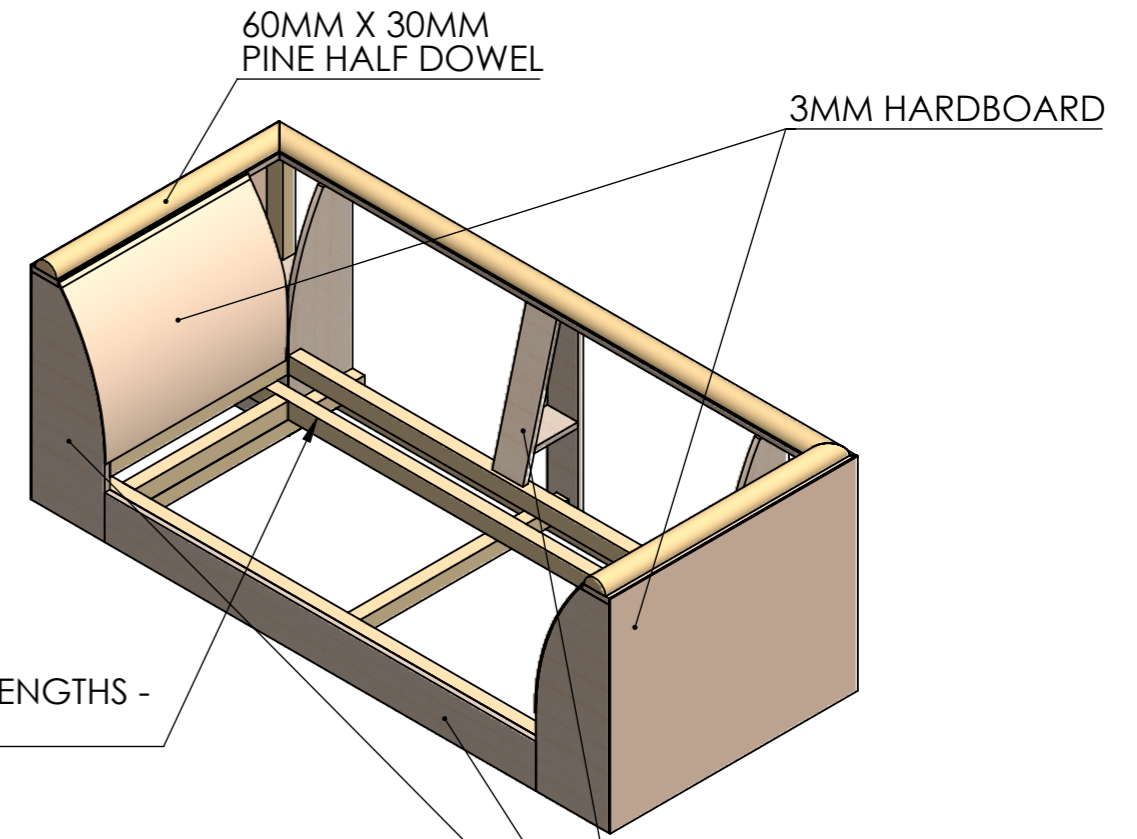
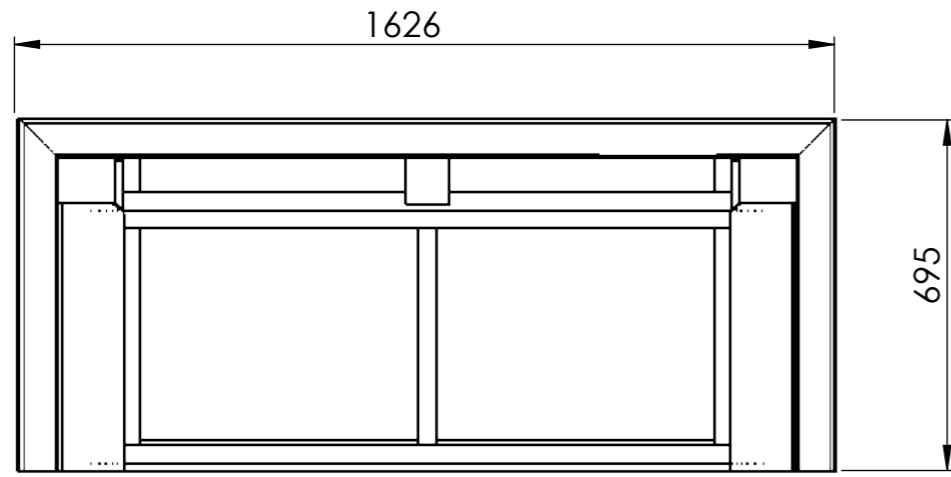
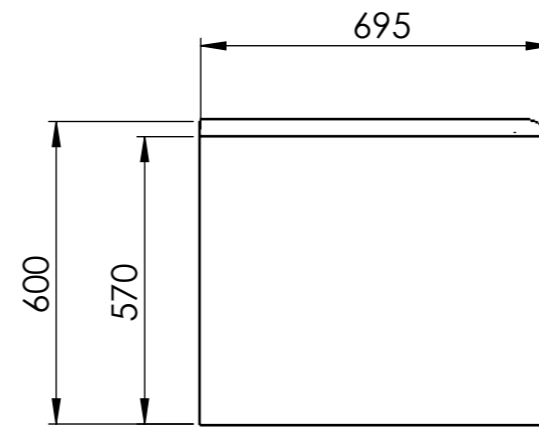
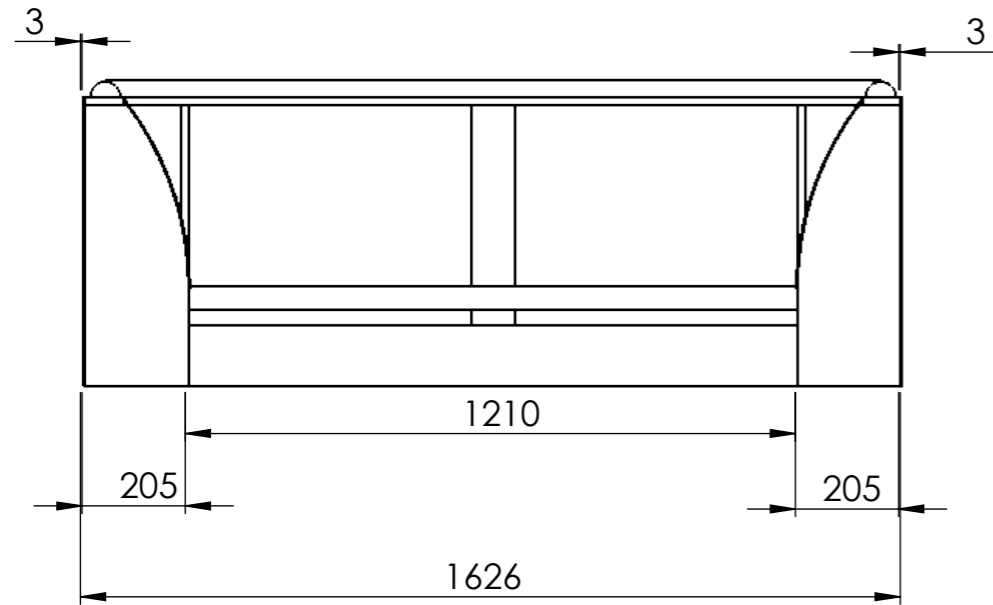


C12 - FRAME

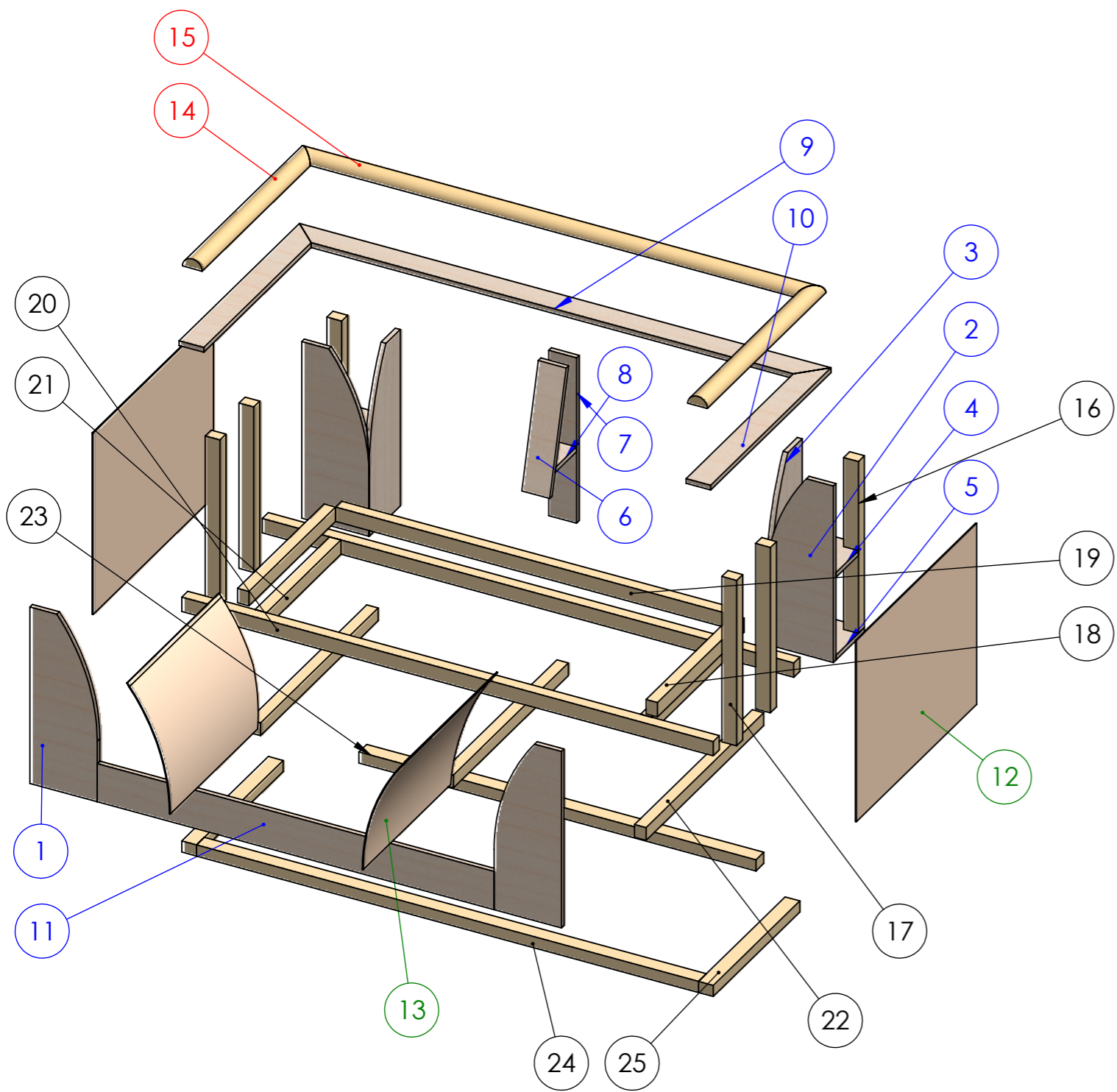


PSE STRUCTURAL LENGTHS -
SEE NEXT PAGE

LENGTHS & SHAPED
15MM PLYWOOD -
SEE NEXT PAGE



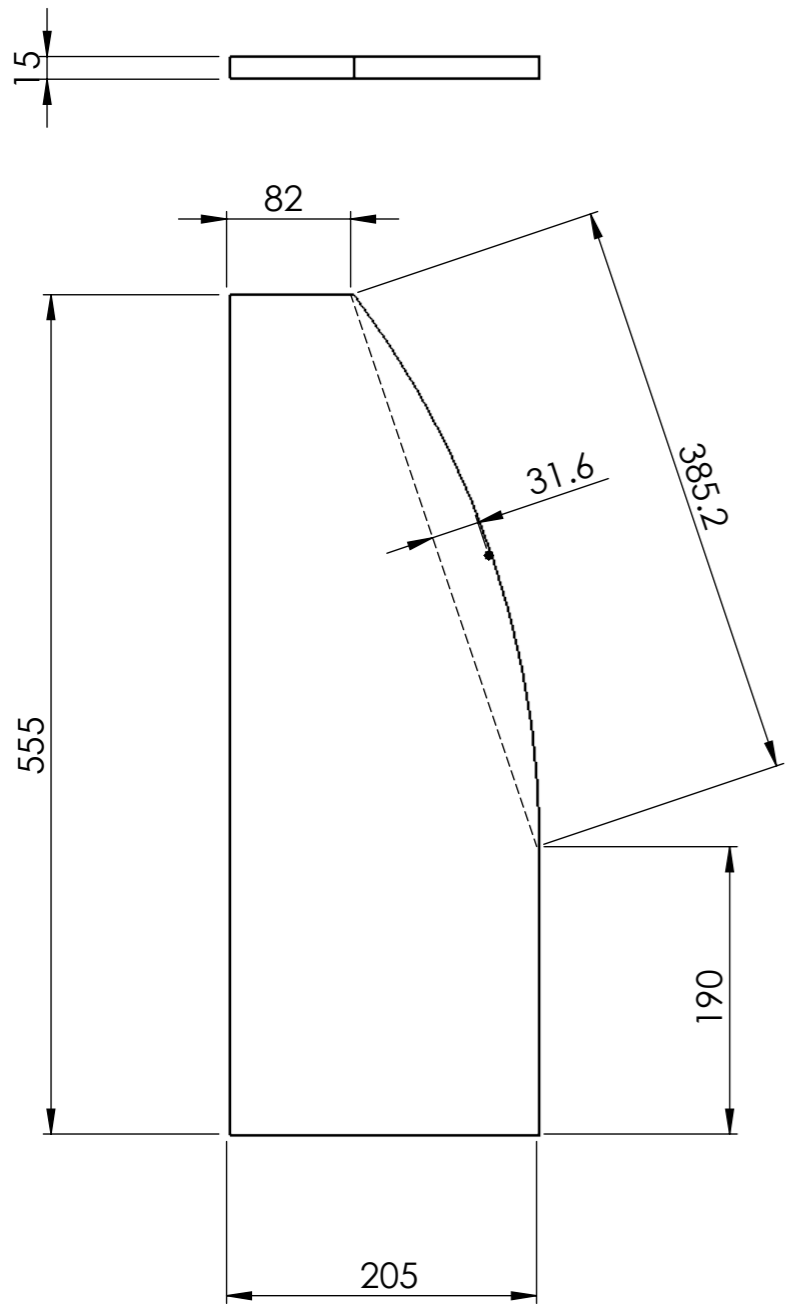
C12 - FRAME COMPONENTS



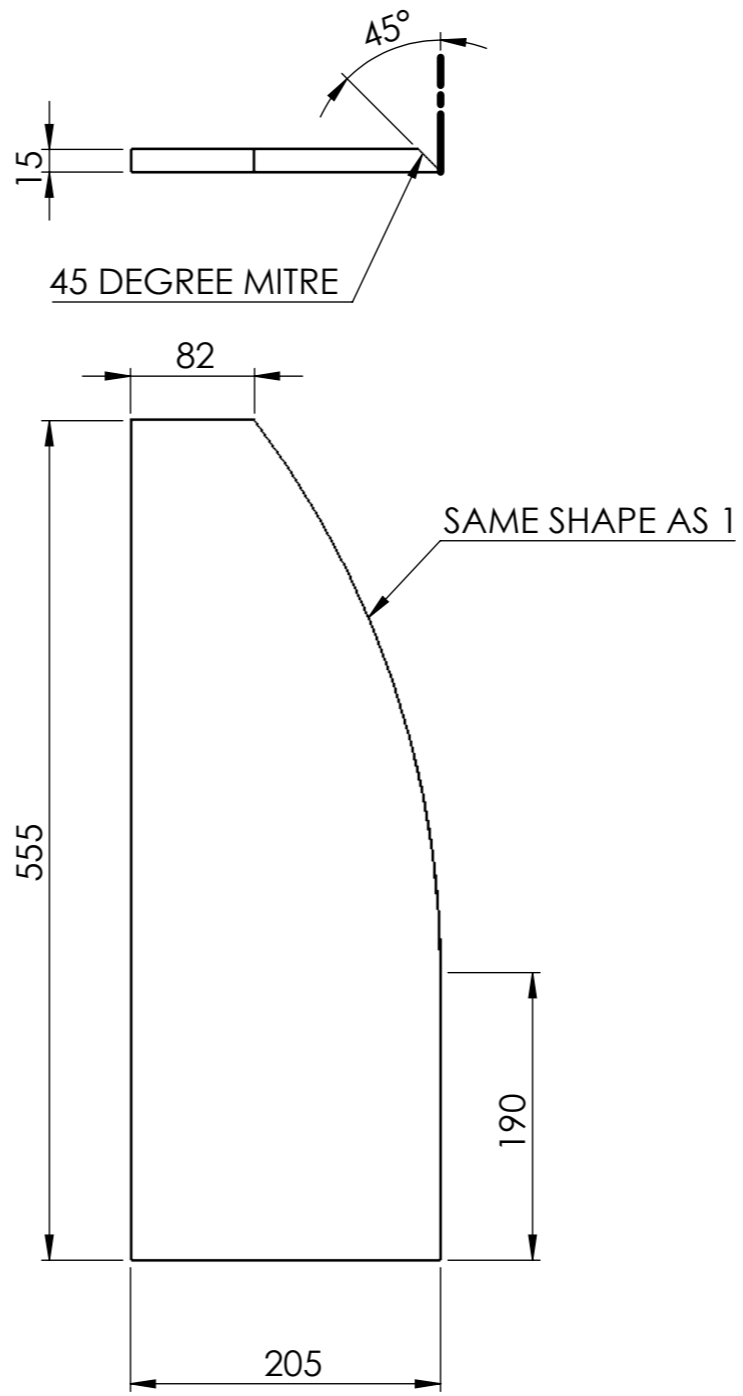
ITEM	QUANT	SIZE	NOTES
1 - SHAPED PLY FRONT ARM	2	SEE NEXT PAGE	15MM PLY
2 - SHAPED PLY BACK ARM	2	SEE NEXT PAGE	15MM PLY
3 - SHAPED PLY BACK	2	SEE NEXT PAGE	15MM PLY
4 - PLY CORNER BRACE	2	190 X 165 X 15	15MM PLY - REMOVE CORNER FOR PSE FIT
5 - PLY CORNER BRACE	2	190 X 165 X 15	15MM PLY
6 - PLY BACK ANGLE	1	373 X 85 X 15	15MM PLY - ANGLED BETWEEN RAIL & TOP
7 - PLY BACK PANEL	1	520 X 85 X 15	15MM PLY
8 - PLY BACK BRACKET	1	SHAPED TO BRACE	15MM PLY
9 - PLY TOP RAIL LONG	1	1620 X 75 X 15	15MM PLY - 45 DEGREE ANGLE TO BOTH ENDS
10 - PLY TOP RAIL SHORT	2	695 X 75 X 15	15MM PLY - 45 DEGREE ANGLE TO ONE END
11 - PLY FRONT	1	1210 X 120 X 15	15MM PLY
12 - HARDBOARD SIDE	2	695 X 570 X 3	3MM HARDBOARD
13 - HARDBOARD IN-ARM	2	530 X 405 X 3	3MM HARDBOARD - ANGLE CUT FOR BACK SHAPE TO FIT
14 - TOP SHAPER SHORT	2	685 X 60 X 30	PINE HALD DOWEL - 45 DEGREE TO ONE END
15 - TOP SHAPER LONG	1	1600 X 60 X 30	PINE HALD DOWEL - 45 DEGREE TO BOTH ENDS
16 - VERTICAL CORNER PSE	2	540 X 45 X 35	45 X 35 PSE
17 - SIDE BRACES PSE	4	520 X 45 X 35	45 X 35 PSE
18 - ARM SIDE RAIL PSE	2	500 X 45 X 35	45 X 35 PSE
19 - BACK WEBBING PSE	1	1210 X 45 X 35	45 X 35 PSE
20 - SEAT RAILS LONG PSE	2	1620 X 45 X 35	45 X 35 PSE
21 - SEAT RAILS SIDES PSE	2	430 X 45 X 35	45 X 35 PSE
22 - UNDER SEAT SUPPORTS	3	680 X 40 X 35	40 X 35 PSE
23 - BOTTOM BACK RAIL	1	1210 X 45 X 35	45 X 35 PSE (SHORT SIDE VERTICAL)
24 - BOTTOM FRONT RAIL	1	1530 X 45 X 35	45 X 35 PSE (SHORT SIDE VERTICAL)
25 - BOTTOM SIDE RAILS	2	500 X 45 X 35	45 X 35 PSE (SHORT SIDE VERTICAL)

C12 - FRAME SHAPED COMPONENTS

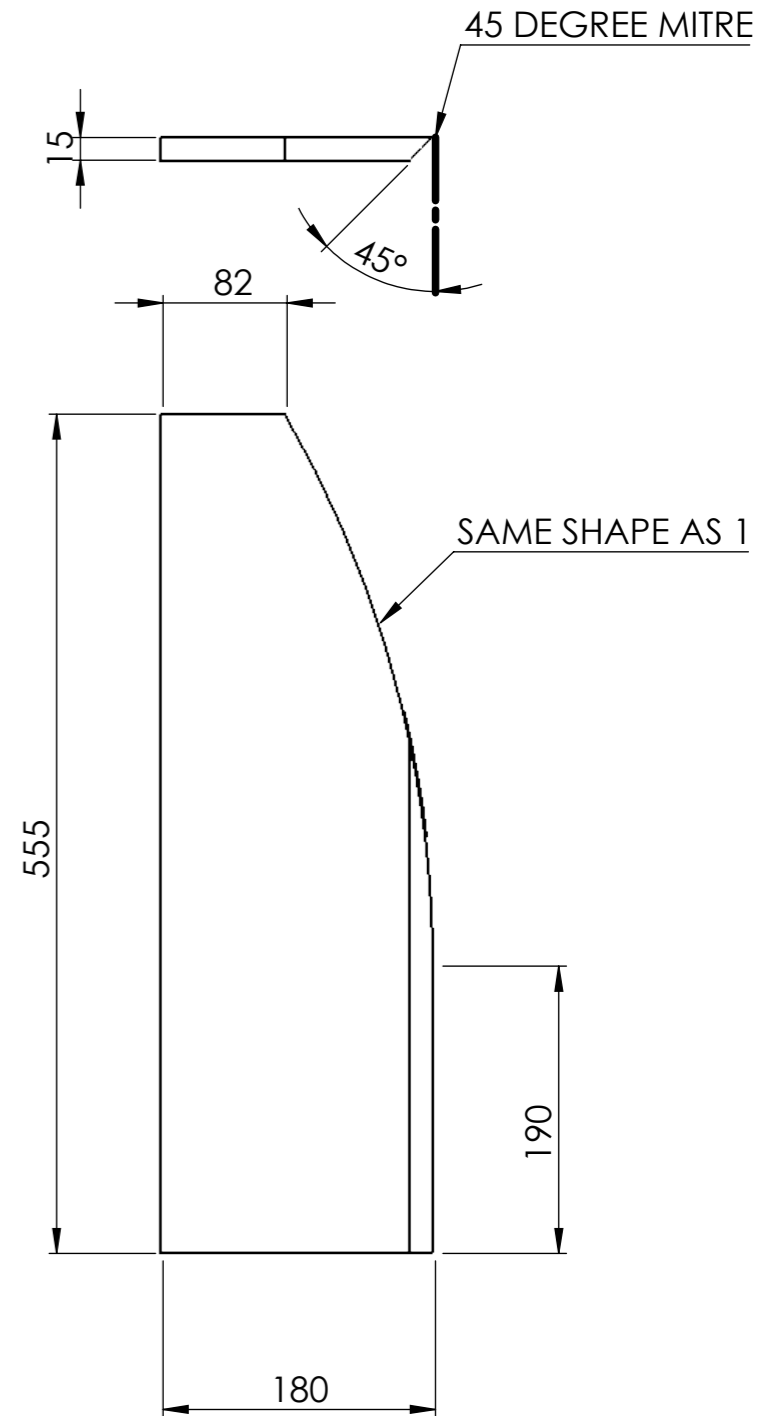
ITEM 1 - 2 X ITEMS FLIPPED



ITEM 2 - 2 X ITEMS FLIPPED

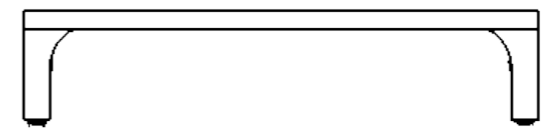
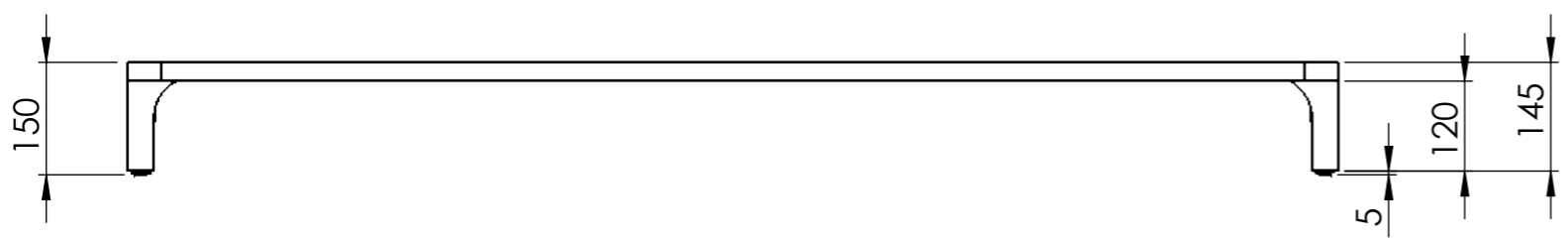
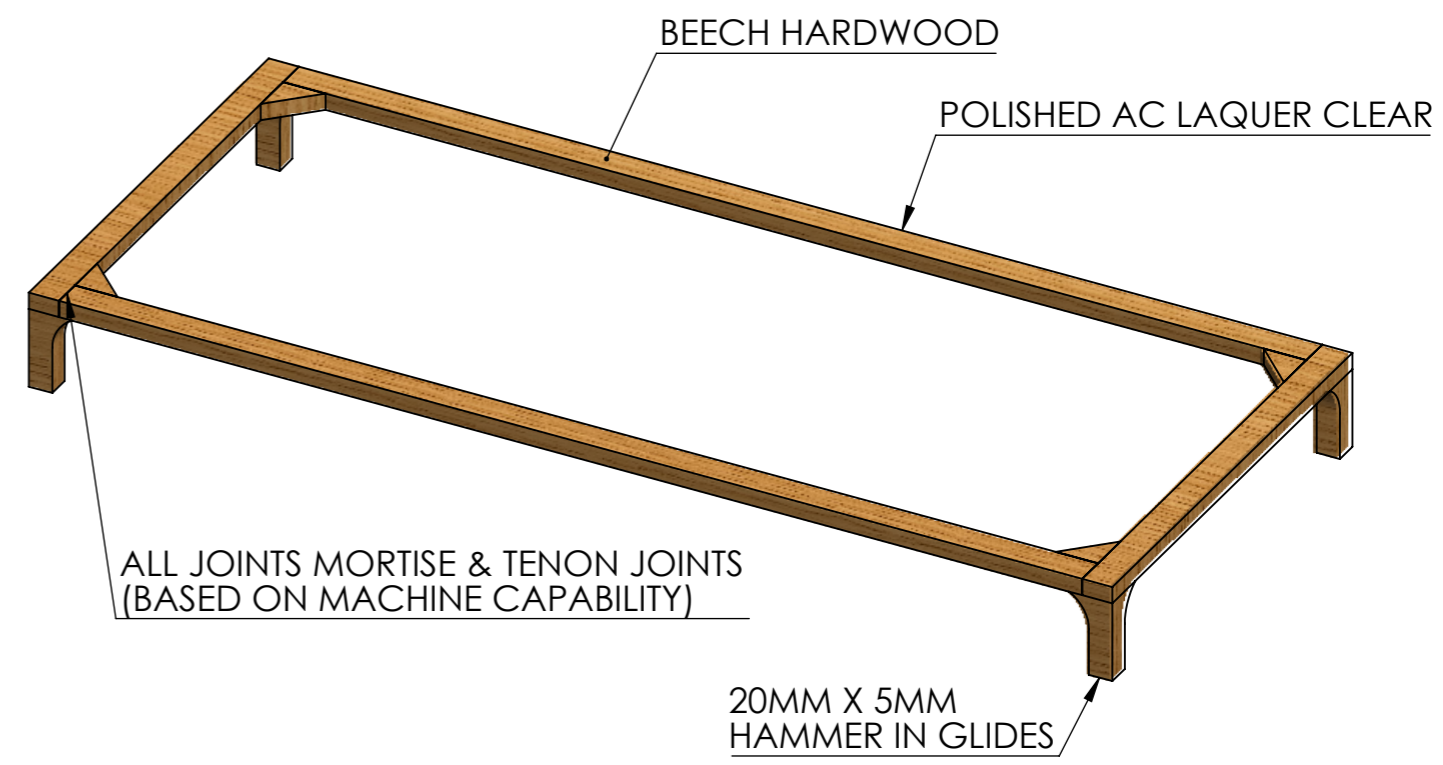
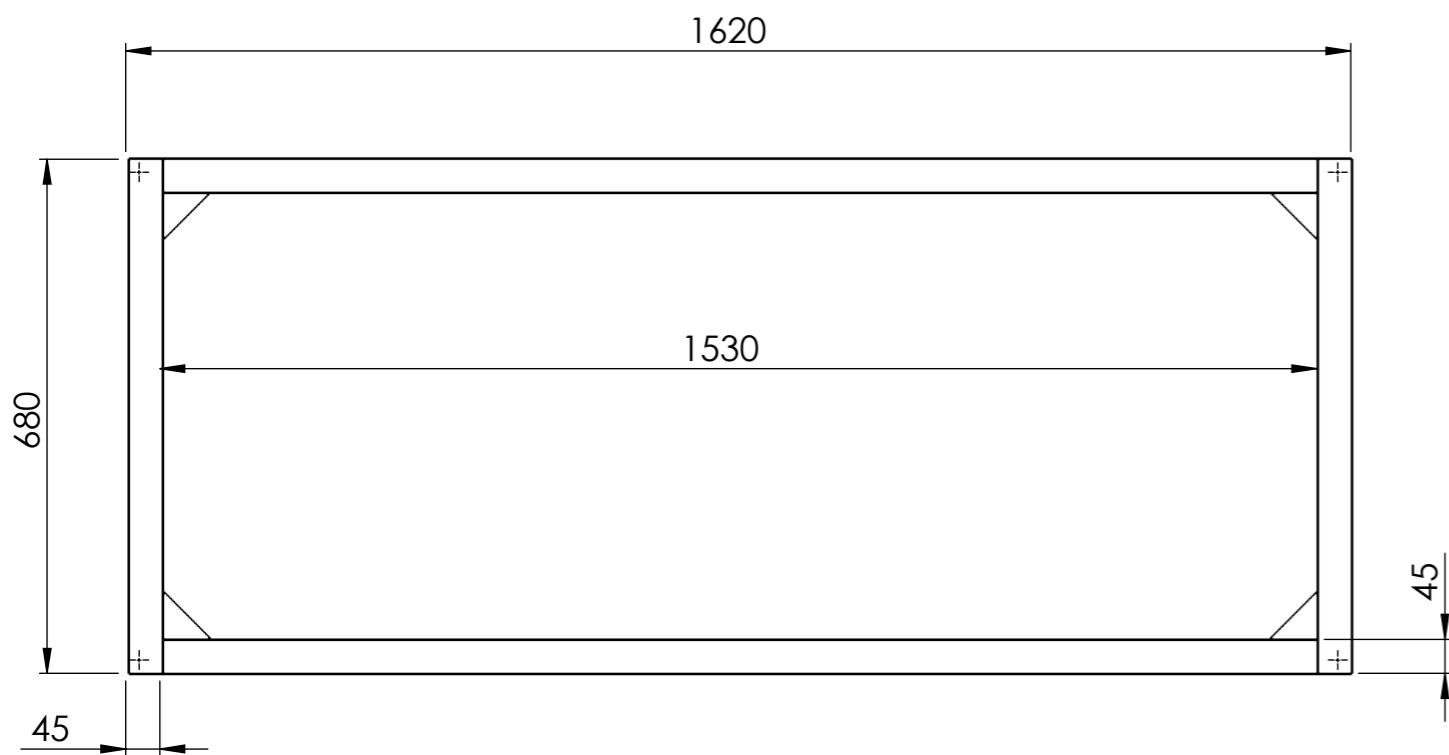


ITEM 3 - 2 X ITEMS FLIPPED

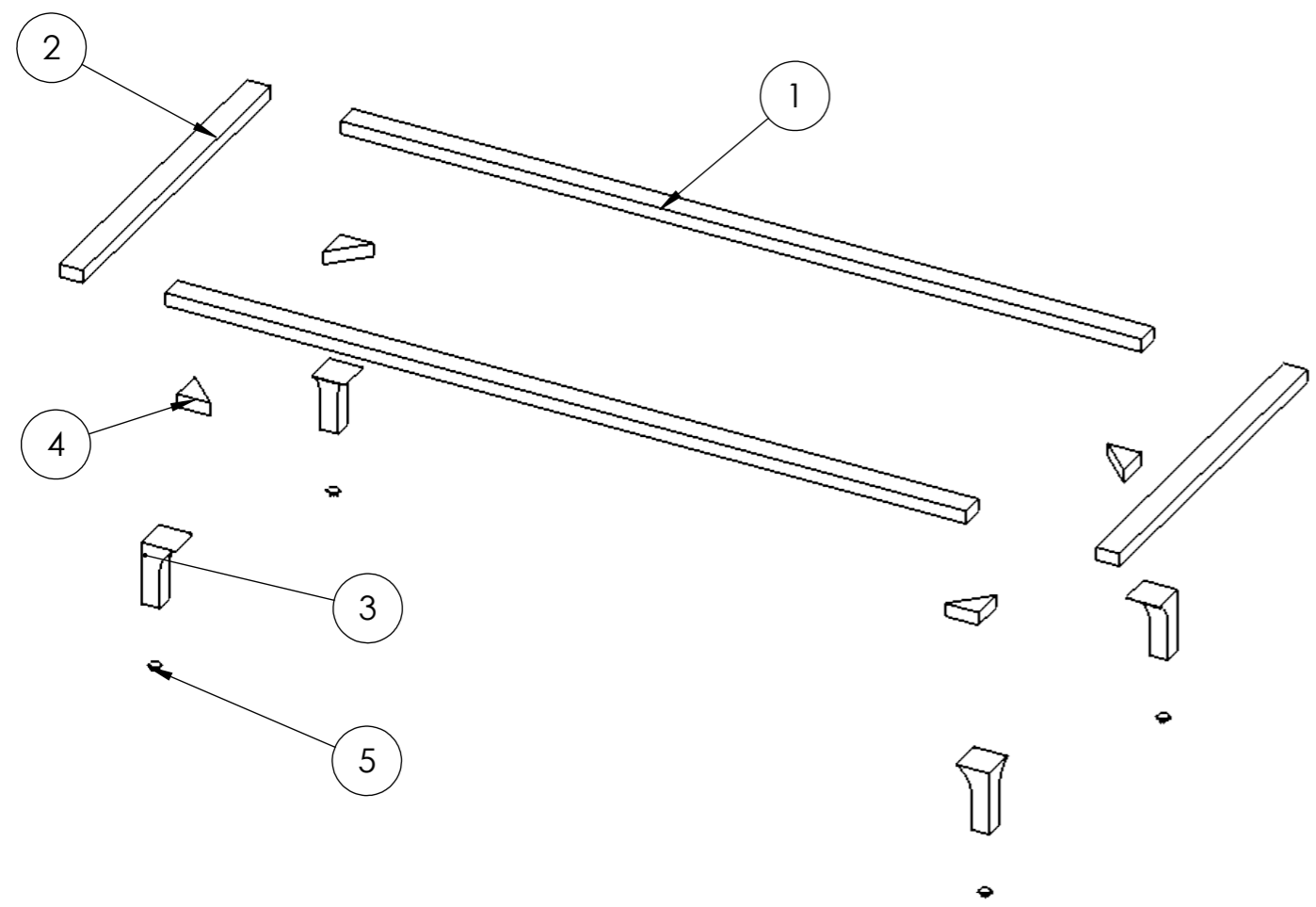


C12 - HARDWOOD LEG FRAME

**TO BE DRILLED AND SCREWED TO FRAME
AFTER UPHOLSTERY IS COMPLETED**

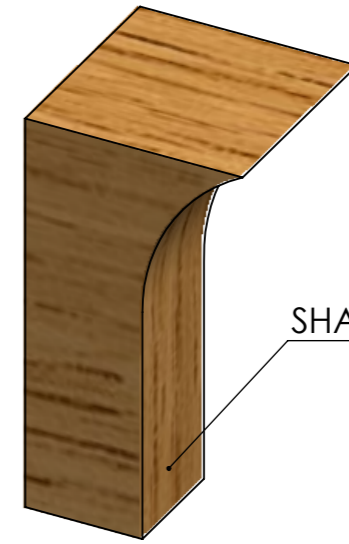
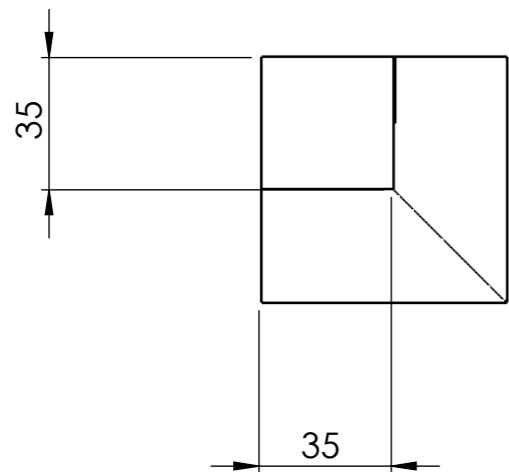
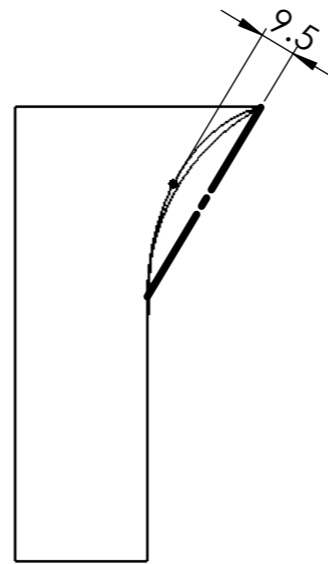
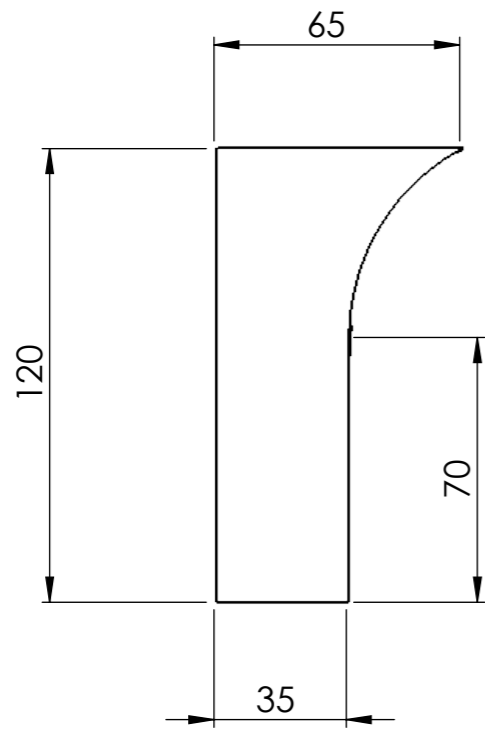
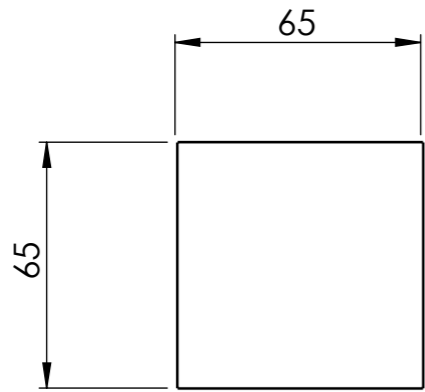


C12 - HARDWOOD LEG FRAME COMPONENTS



ITEM	QUANTITY	SIZE	NOTES
1 - HARDWOOD LENGTHS	2	1530 X 45 X 25	BEECH HARDWOOD
2 - HARDWOOD SIDES	2	680 X 45 X 25	BEECH HARDWOOD
3 - HARDWOOD LEGS	4	120 HEIGHT (SEE NEXT PAGE FOR BREAKDOWN)	BEECH HARDWOOD
4 - CORNER BRACES	4	SIZED TO FIT AND BRACE CORNERS	BEECH HARDWOOD
5 - HAMMER IN GLIDES	4	20 DIAM X 5	PLASTIC HAMMER IN GLIDES

C12 - HARDWOOD LEGS



SHAPED HARDWOOD LEG